
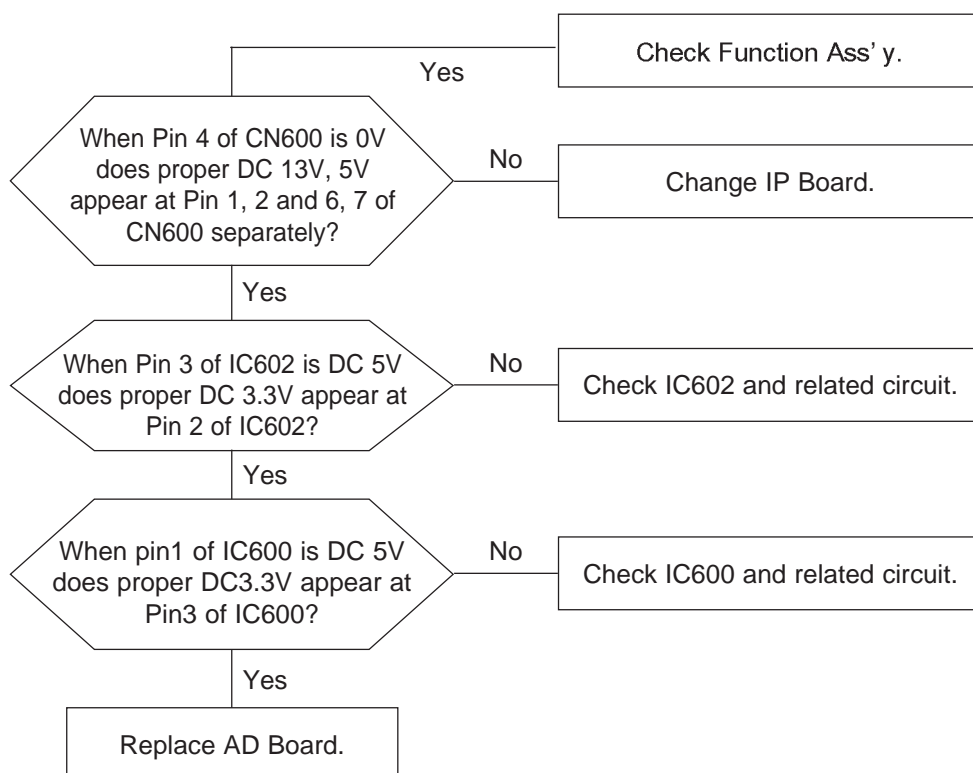



4 Troubleshooting

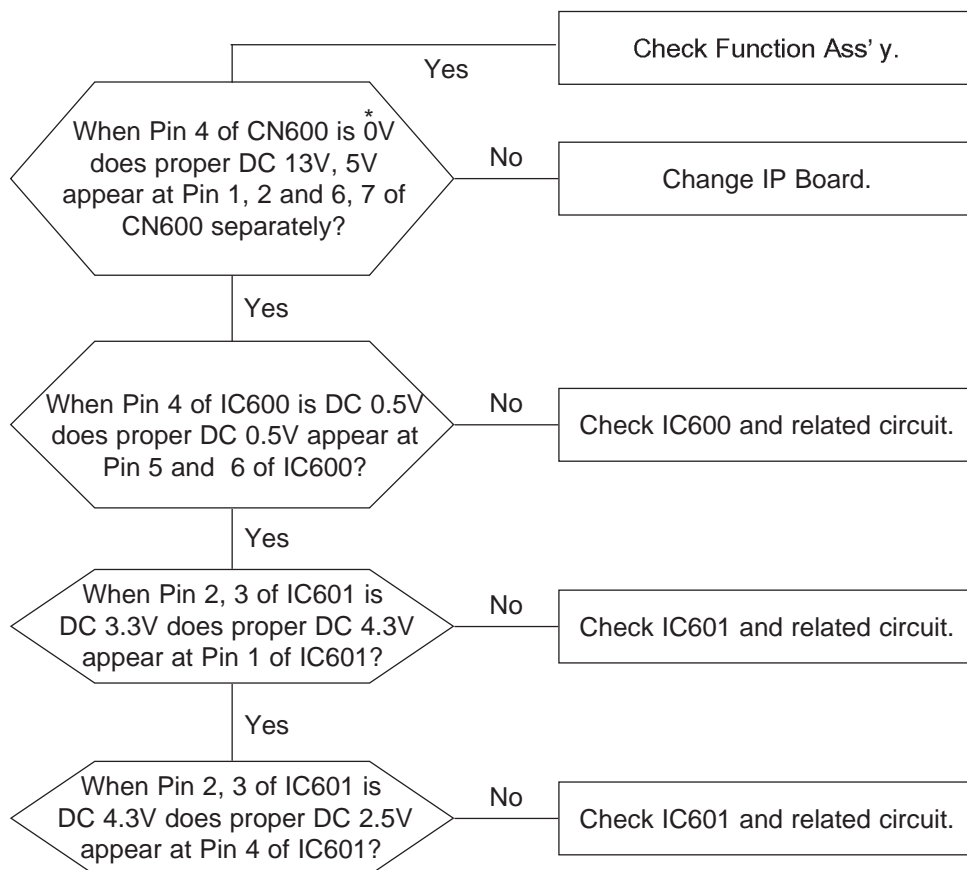
- Notes:**
- Before troubleshooting, setup the PC's display as below.
 - Resolution: 1024 x 768
 - H-frequency: 61 kHz
 - V-frequency: 75 Hz
 - If no picture appears, make sure the power cord is correctly connected.
 - Check the following circuits.
 - No raster appears: Function PBA, Main PBA, I/D PBA
 - 5V develop but no screen: Main PBA
 - 5V does not develop: I/D PBA
 - If you push and hold the “ (Enter, Source)” button for more than 5 seconds, the monitor automatically returns to the factory preset.

4-1 No Power (LS15HAA/LS15HAB)



- Notes:
1. Before troubleshooting, setup the PC's display as below.
 - Resolution: 1280 x 1024
 - H-frequency: 64 kHz
 - V-frequency: 60 Hz
 2. If no picture appears, make sure the power cord is correctly connected.
 3. Check the following circuits.
 - No raster appears: Function PBA, Main PBA, I/P PBA
 - 5V develop but no screen: Main PBA
 - 5V does not develop: I/P PBA
 4. If you push and hold the " (Enter/Source)" button for more than 5 seconds, the monitor automatically returns to the factory preset.

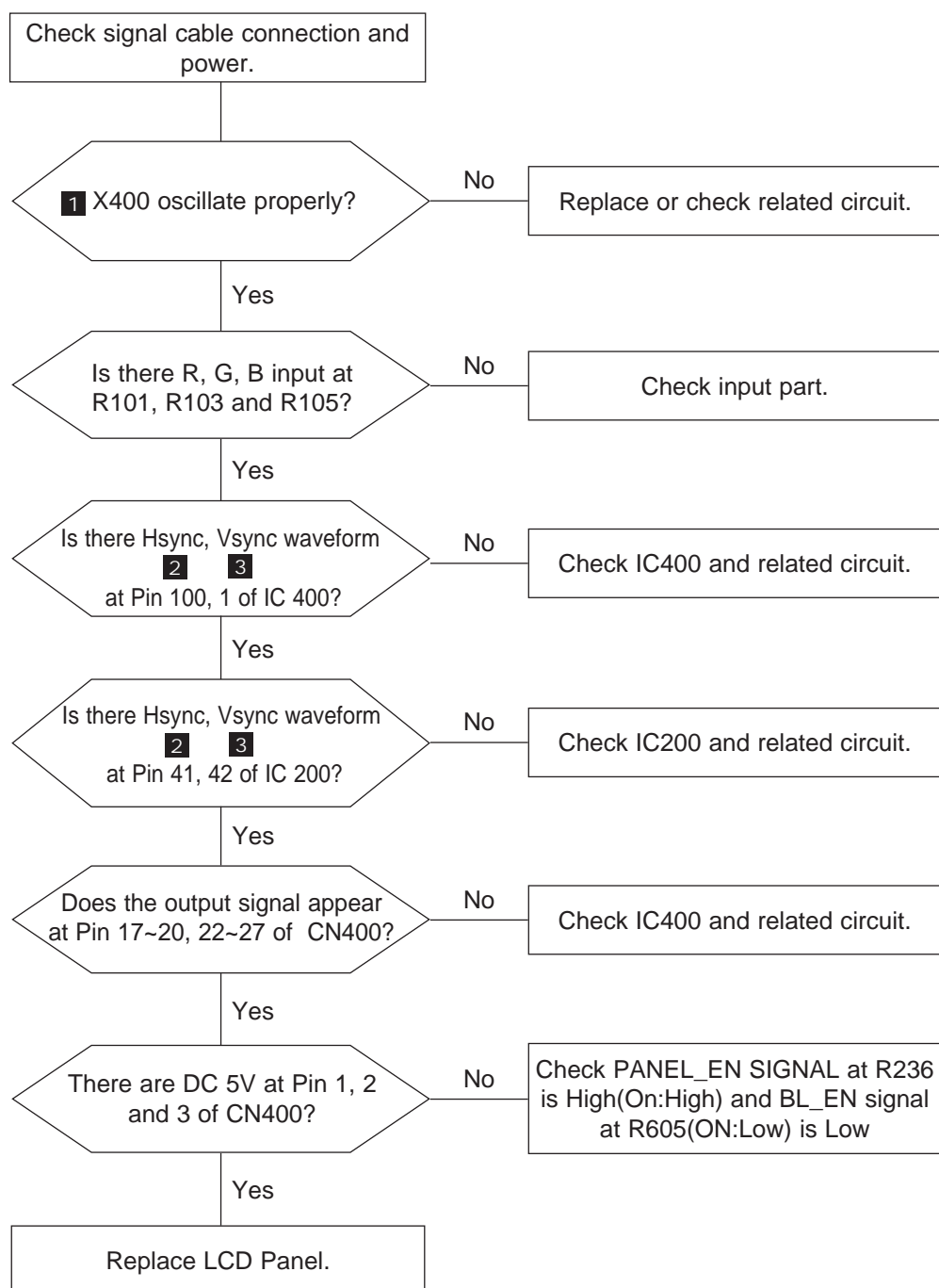
4-2 No Power(LS17HAA/LS17HAB/LS17HAT/LS19HAA/LS19HAT)



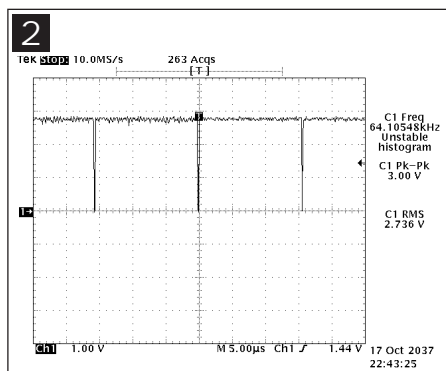
* 0V means power on state.

When the monitor work well except DPMS and power switch off,
0V should be applied to number 4 of CN600.

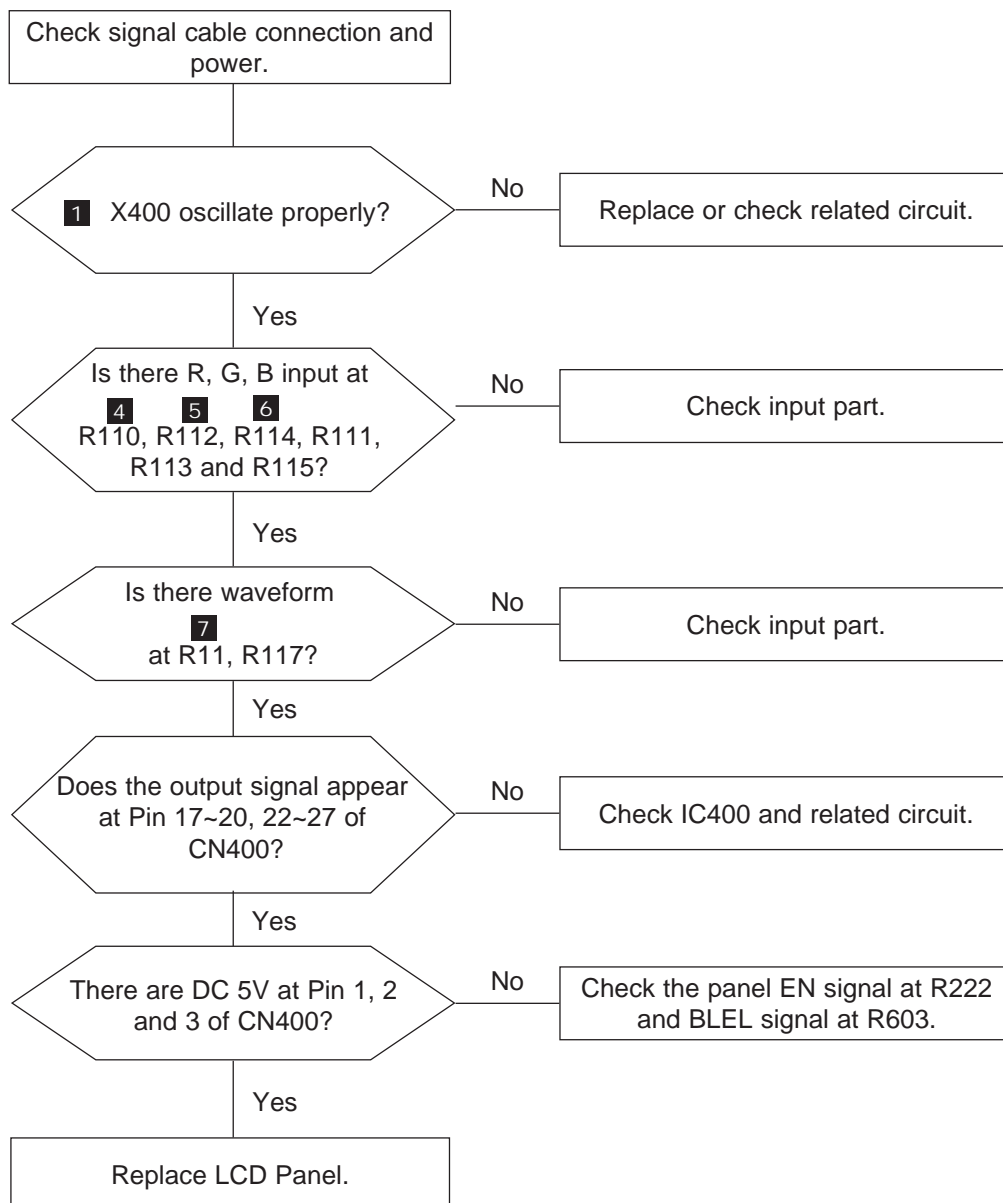
4-3 No Video (ANALOG)



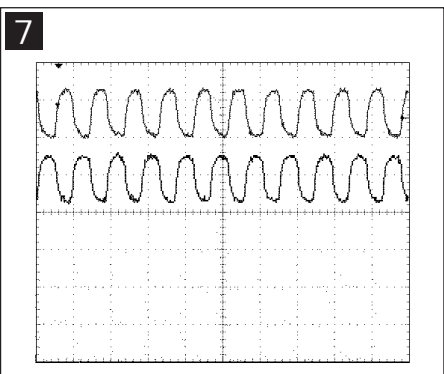
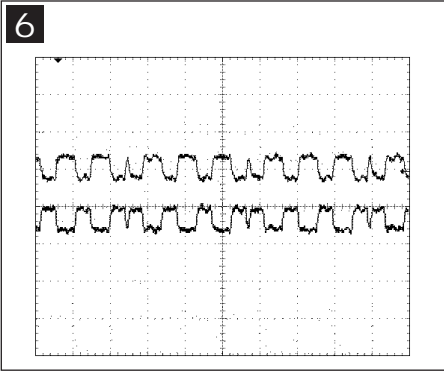
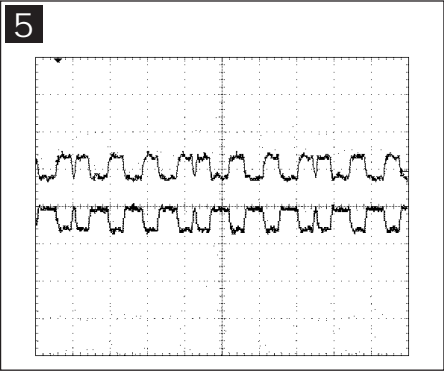
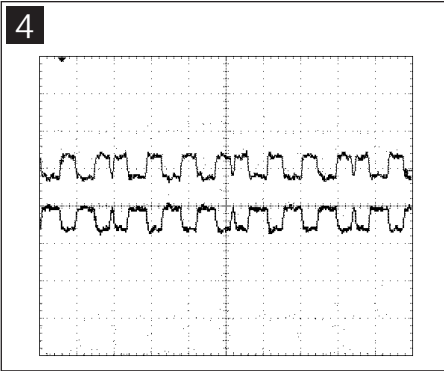
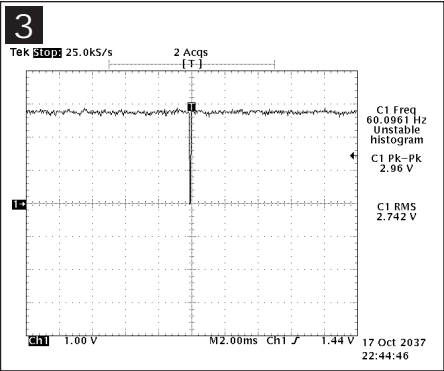
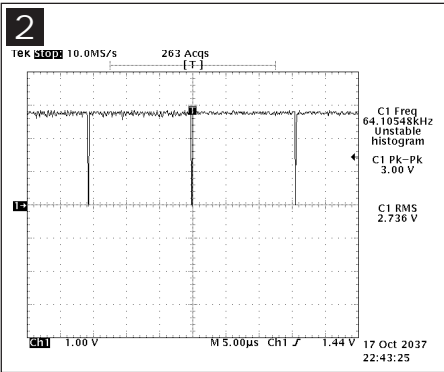
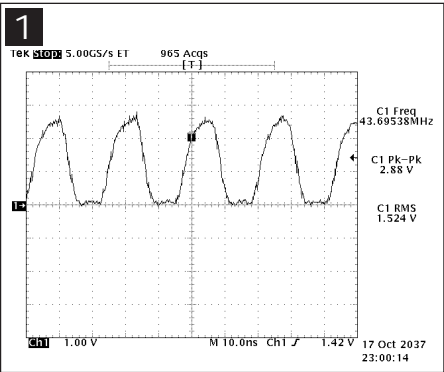
WAVEFORMS

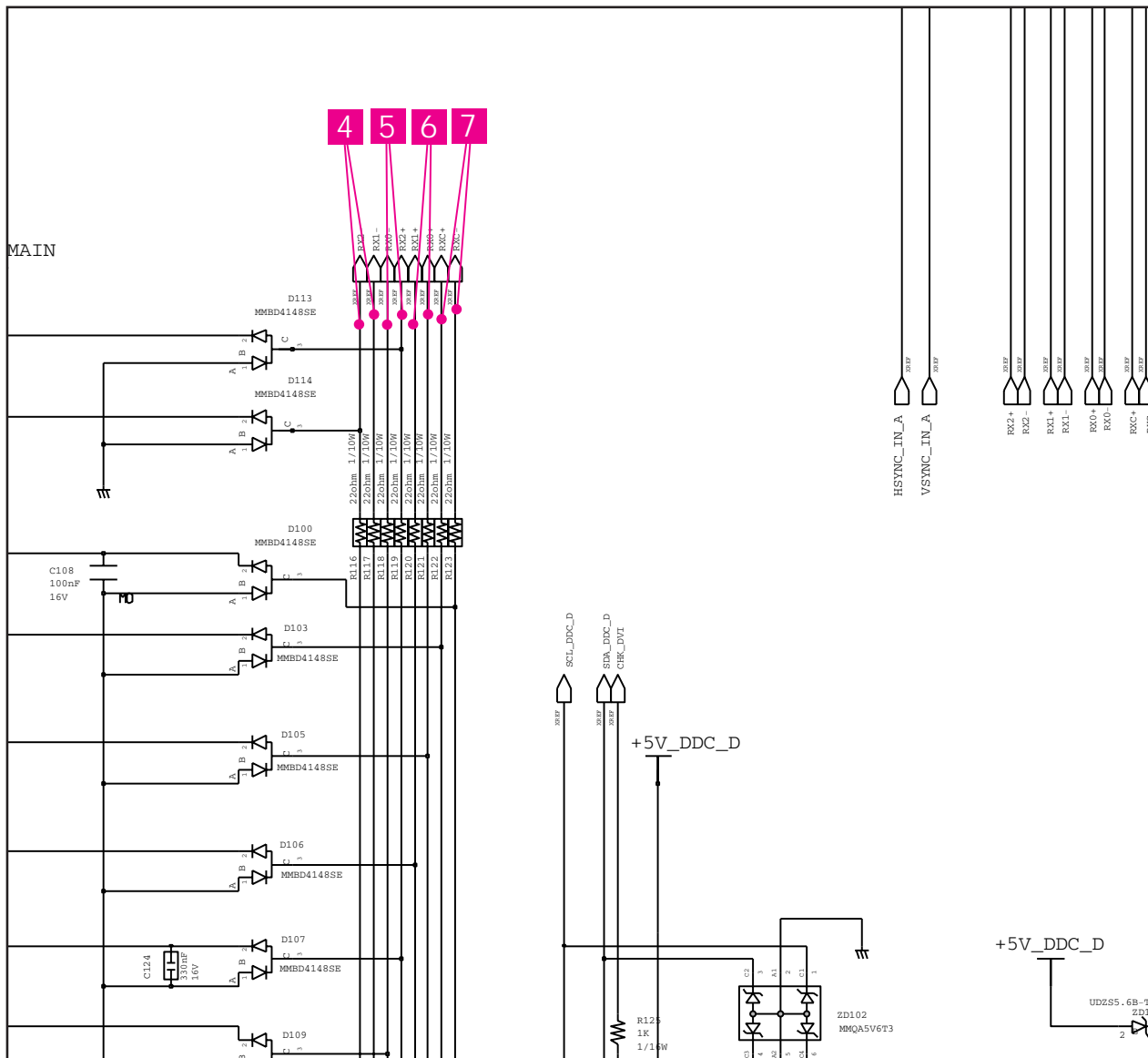


4-4 No Video (DIGITAL)



WAVEFORMS





Memo